



Colour & Finish  
Aster Neptune

# The future of architectural surfaces

The future of architectural surfaces is here :  
MAXIMUM award-winning 3000 x 1500 x 6mm high  
performance, pressed porcelain panels.

Beyond the limits of classical ceramic sizes, beyond traditional  
spatial boundaries, this innovative format has been developed &  
made in Italy by Graniti Fiandre using leading edge technology.  
MAXIMUM pressed porcelain provides designers with a unique,  
lightweight architectural finish that delivers a beautiful, natural  
aesthetic with greater strength & design flexibility.



  [maximumaustralia.com](https://www.maximumaustralia.com)





# Maximum design scope

Imagine designing beyond traditional spatial boundaries.

Maximum is the first technical porcelain panel with these extraordinary dimensions: 1.5 metres wide, 3 metres long and just 6mm thin. Available in 40 incomparable colours and finishes, Maximum is lightweight, durable, UV stable, environmentally friendly and cost effective, providing limitless design possibilities.

---

## The Pipers Installation

Marmi Statuario, Nero Supremo & Travertino

Design by Thomas Coward Studio for Sydney In Design event



**Benchtop & Splashback**  
Aster Moon 8mm  
M House, Melbourne  
Design by DKO Architects





#### INFINITE SOLUTIONS

Thin, lightweight (14.67kg/m<sup>2</sup>) and easy to use, MAXIMUM pressed porcelain offers limitless design possibilities for interior and exterior commercial, retail and residential projects, from small space renovations through to multi-story ventilated facades.



#### BEAUTIFUL, DURABLE & COST EFFECTIVE

Designed to outperform composite stone and quarry materials, MAXIMUM is UV stable, scratch, thermal shock resistant as well as stain and mould resistant. MAXIMUM is available in more than 40 beautiful colours & textures from finishes inspired by nature, to the cool contemporary look of concrete.





**Benchmark & Cupboard Fascias**  
Datauni Pepper matt 6mm

Summit Display Home  
by Beechwood Homes

#### SUSTAINABLE, SAFE AND 100% NATURAL

MAXIMUM pressed porcelain panels are made entirely from natural materials such as sand, quartz, clay, feldspar and recycled content. State of the art technology and equipment is used to combine these materials in a unique manufacturing process that contains no toxic resins or chemical binders like those used in reconstituted stone products, ensuring no harmful off gassing.

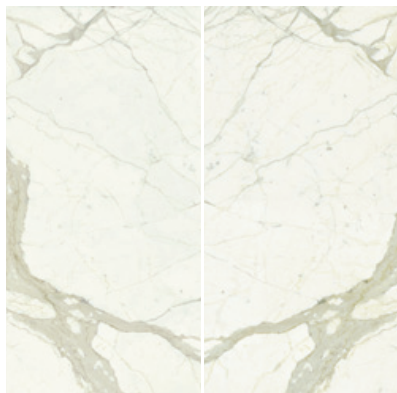
## BOOK & VEIN MATCHING

The MAXIMUM Marmi collection captures the luxurious look of marble with its distinctive vein structures and soft colours delivered with the outstanding durability and versatility of a large format, pressed porcelain tile. This extraordinary architectural surface offers an aesthetic that is incredibly similar to that of the finest quarry materials, even offering beautiful book matched pairs and vein matched variations.





---

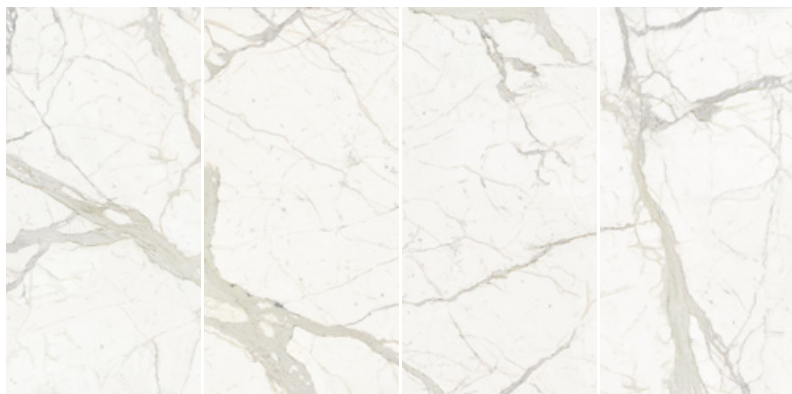
**MARM CALACATTA BOOK MATCHED**

B1

B2

MAXIMUM pressed porcelain technology successfully delivers the highly sought after classic look of Calacatta marble with its distinctive vein structures and soft colours. Available in four vein matched variations and a book matched pair in polished or matt finishes.

---

**MARM CALACATTA VARIATIONS**

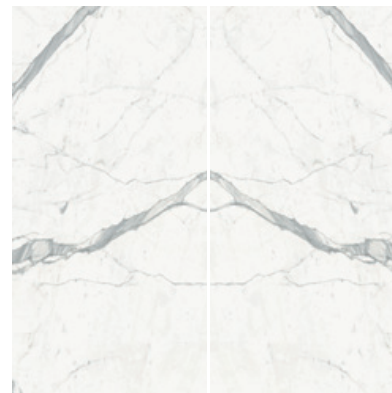
A

B

C

D

---

**MARM STATUARIO BOOK MATCHED**

B1

B2

The luxurious look of Statuario marble has been beautifully captured with its distinctive cool grey vein structures and sharp white background. Available in four vein matched variations and a book matched pair in polished or matt finishes.

---

**MARM STATUARIO VARIATIONS**

A

B

C

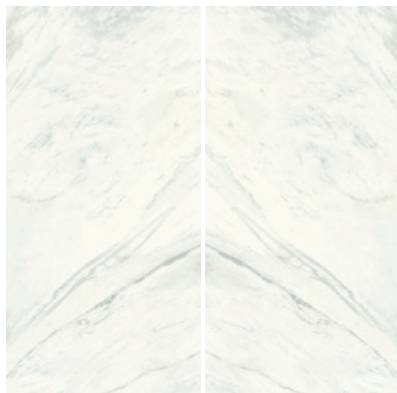
D



**Wall & Drawer Fronts**  
Marmi Statuario polished & booked matched  
**Floor**  
Marmi Taxos matt



#### MARMİ MICHELANGELO BOOK MATCHED



B1

B2

The look of Michelangelo marble is beautifully represented with its off-white background and subtle mid-grey striated veining. Available in four vein matched variations and a book matched pair in polished or matt finishes.

#### MARMİ MICHELANGELO VARIATIONS



A

B

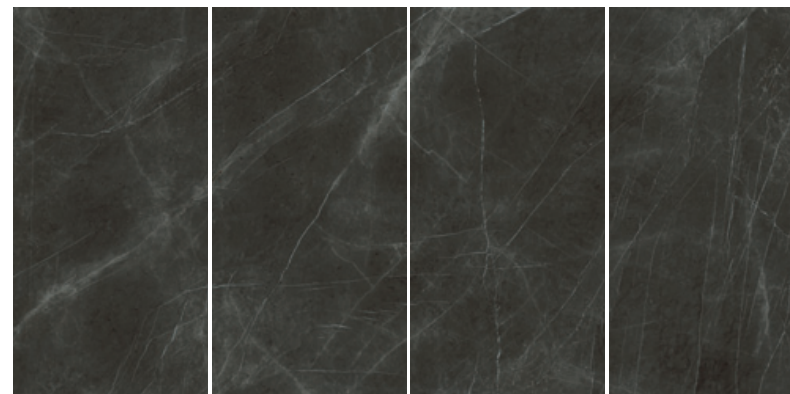
C

D



**Floor**  
Marmi Pietra Grey and  
Marmi Michelangelo polished

#### MARMİ PIETRA GREY VARIATIONS



A

B

C

D

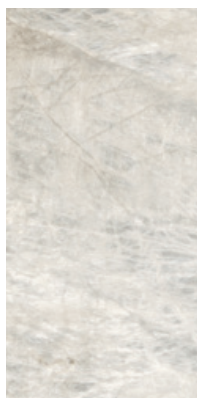
The sought-after style of Pietra Grey marble has been beautifully captured in MAXIMUM's unique pressed porcelain panels with its warm grey-brown background and fine white feathered veining. Available in four vein matched variations in polished or matt finish.



**Marmi • Statuario**



**Marmi • Nero Supremo**



**Marmi • Cristallo**



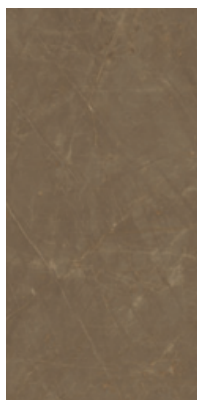
**Marmi • Gold Onyx**



**Marmi • Calacatta**



**Marmi • Taxis**



**Marmi • Pietra Bronze**



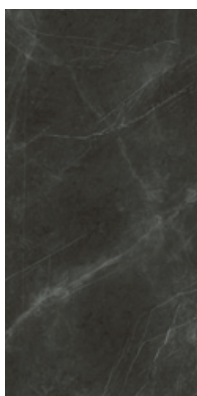
**Marmi • Bright Onyx**



**Marmi • Michelangelo**



**Marmi • Royal Marfil**



**Marmi • Pietra Grey**



**Marmi • Travertino**

**Marmi range**  
Nominal thickness - 6mm (all) & 10mm (Statuario, Calacatta, Pietra Grey)  
Slab Size - 3000 × 1500 (4.5m²)  
Nominal weight - 6mm - 14.67kg/m²



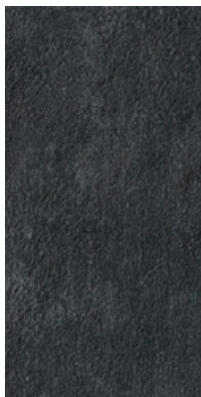
Maximum Porcelain Panels

## COLOURS & FINISHES

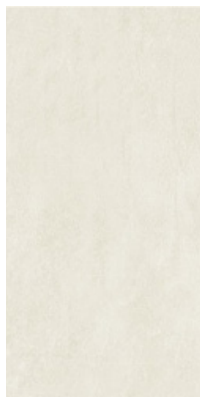
From beautiful colours inspired by nature, to the cool contemporary look of concrete, MAXIMUM is available in a wide range of exclusive finishes suitable for interior or exterior applications in both residential and commercial projects.

**Benchtop** Marmi Statuario matt  
**Floor** Aster Neptune





**Aster** • Moon



**Aster** • Saturn



**Aster** • Mercury



**Aster** • Venus



**Aster** • Neptune

**Aster range**

Nominal thickness · 6mm  
Slab Size · 3000 × 1500 (4.5m<sup>2</sup>)  
Nominal weight · 6mm - 14.67kg/m<sup>2</sup>

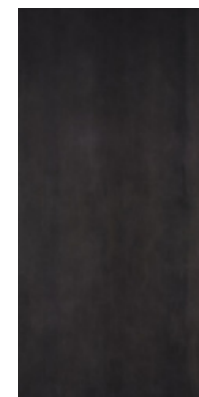


**Floor**

Aster Mercury



**Metals** • Steel



**Metals** • Zinc Titanium



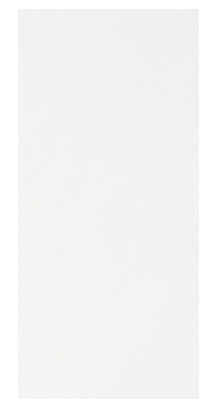
**Metals** • White Iron



**Datauni** • Pepper



**Metals** • Oxidum



**Datauni** • Ice

**Datauni range**

Nominal thickness · 6mm  
Slab Size · 3000 × 1500 (4.5m<sup>2</sup>)  
Nominal weight · 6mm - 14.67kg/m<sup>2</sup>

**Metals range**

Nominal thickness · 6mm  
Slab Size · 3000 × 1500 (4.5m<sup>2</sup>)  
Nominal weight · 6mm - 14.67kg/m<sup>2</sup>

---

## FABRICATION NOTES

### Benchtop and splashback installation tips for achieving the best results.

- 1. Handling Material** - Take care during transit. For benches with cutouts, lay bench against a solid substrate such as MDF or similar, ensuring that backing support is at least 2cm larger than the bench-top. Strap, clamp or tape both together, so handling will be easier and to avoid potential damage. Always carry panels edge on i.e. vertically, not horizontally.
- 2. Substrate** - When selecting a substrate for benchtops always use a rigid and continuous moisture-resistant substrate such as CFC, FC or other. Ensure that the substrate has no flex. Do not install MAXIMUM panels over timber support bench battens without a suitable substrate.
- 3. Adhesives** - The fabricator or installer should use the following recommended adhesives for substrates and mitres. Mapei Keralastic, Mapei G19 or T-Rex for adhesion to substrates. Apply adhesive to substrate as per manufacturer's guidance. Always lightly skim adhesive to the rear of the panel. 100% adhesive coverage for benchtop substrates and splashbacks is strictly required. **Always respect manufacturer's curing times for adhesives before completing further works such as coring holes or working above the finished MAXIMUM installation.** For mitre joints, Akemi Akepo 5010 epoxy adhesive has excellent adhesion for porcelain.
- 4. Overhangs** - Unsupported overhangs should be minimized. A flush finish to benches or maximum 20mm overhang with angle support is recommended. If larger overhangs are required for island benches, use a suitable support substrate to minimise any potential damage to material due to heavy impact or flex. Substrate must be rigid.
- 5. Under-mounted Sinks** - If the sink is under-mounted, do not adhere sinks to underside of porcelain only. The sink or basin must be fully supported by the substrate. It is essential to avoid over tightening tap fittings. Ensure that MAXIMUM sits flush to the substrate edge and that porcelain and substrate both support the tap base and housing. A solution for fitting taps is to fix the tap base housing direct to the substrate, which means enlarging the hole so that the tap base can be recessed (ensure that silicon is used to prevent moisture ingress). Only use silicon to adhere sink lip (aluminum or stainless element) to MAXIMUM (due to thermal movement of metal) and adhesive to fix MAXIMUM to substrate. Ensure that the silicon and adhesive sit at the same level and thickness.
- 6. Top-Mounted Sinks** - If the sink is top mounted ensure that MAXIMUM sits flush to edge of substrate. Maximum to be completely adhered to the substrate. Substrate to support sink weight.
- 7. Cut outs for sinks or cook tops** - Cut outs should have rounded internal corners (min. 10mm radius) to prevent radial cracking. Specifically, items like shower niches, fireplaces etc. where the porcelain might be expected to return in from one or more faces with a mitred or butt joint. It is essential that the face panel is sectioned around this type of opening to avoid stress points in the product, where subsequent movement in the structure may cause a fracture. We recommend a minimum 80mm to any panel edge from cook-top or sink cut out. Minimum of 50mm to any edge of tap hole from panel edge or edge of sink.
- 8. Splashbacks** - When adhering splashbacks to the rigid moisture resistant substrate, do not spot fix. Always achieve 100% adhesive coverage.

The fabricator or installer must read the Fabrication & Joinery Installation Manual thoroughly before engaging in installation. To download the Installation Manual or view installation videos, please visit [www.maximumaustralia.com](http://www.maximumaustralia.com). Contact your MAXIMUM distributor for any installation questions.

---

## CARE AND MAINTENANCE

**MAXIMUM pressed porcelain panels** are stain, scratch and thermal shock resistant; they are also UV resistant, therefore suitable for internal and external use. To ensure that the surface stays in excellent condition it is recommended that all maintenance guidelines are carefully followed.

**Stain Resistance** – MAXIMUM panels are stain resistant. However, to keep the finish in top condition, normal daily care must be taken to immediately clean up stains and spills, especially on polished surfaces.

**Routine Cleaning** – Ensure any food products such as red wine, food, oils and drinks are immediately washed away using warm water or with small quantities of a non-bleach or non-abrasive household cleaner. Use a soft non-abrasive cloth. Do not use cleaners that have high alkaline pH levels, such as oven or drain cleaners. Avoid hydrofluoric acid or its compound.

In the unlikely event of a stain, use a nonabrasive cleaning product, sugar soap, normal cream based house cleaning products or bicarbonate soda mixed with warm water. To remove any other hard substances that may adhere to surface always use a plastic scraper to gently remove material. Avoid the use of industrial and harsh chemicals on the surface, such as paints, paint strippers, permanent markers and inks. To remove permanent marker or similar, pour a small amount of Glitz Premium Bleach over the stain only and let it sit for 4 hours or overnight, then wash off with warm water.

**Heat Resistance** – While MAXIMUM is thermal shock resistant, it is advisable, for safety purposes, to use a heat mat or similar when placing hot pots on the bench.

**Minimising Scratches** – MAXIMUM panels are scratch resistant, not scratch proof. MAXIMUM will easily withstand daily use. Always using cutting boards when preparing food. Avoid sliding heavy metallic objects along the surface.

**General Cleaning** – To clean and revitalise MAXIMUM porcelain surfaces, use Glitz Green eucalyptus oil (available from Bunnings). Use a dry soft cloth and gently wipe over the surface.

**External Use** – MAXIMUM is UV resistant and can be used externally. Follow routine cleaning procedures as you would internally.

**For further assistance or advice, please contact your MAXIMUM distributor.**



**Benchtop, Splashback & Table**  
Marmi Statuario 6mm  
Maple Apartments, Melbourne  
Design by Studio You Me



#### SPECIFICATIONS

3000 x 1500 standard panel size	1500 x 750	750 x 350
		750 x 750
	1500 x 1500	

#### Marmi, Aster, Datauni & Metals Range

**Nominal thickness**  
6mm & 10mm (selected products)

**Slab Size**  
3000 x 1500 (4.5m<sup>2</sup>)

**Nominal weight**  
6mm - 14.67kg/m<sup>2</sup>

For detailed individual product specifications, technical data, design inspiration  
and more about the MAXIMUM story please visit [www.maximумаustralia.com](http://www.maximумаustralia.com)